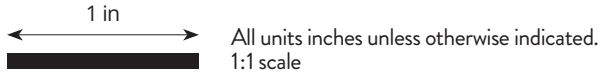
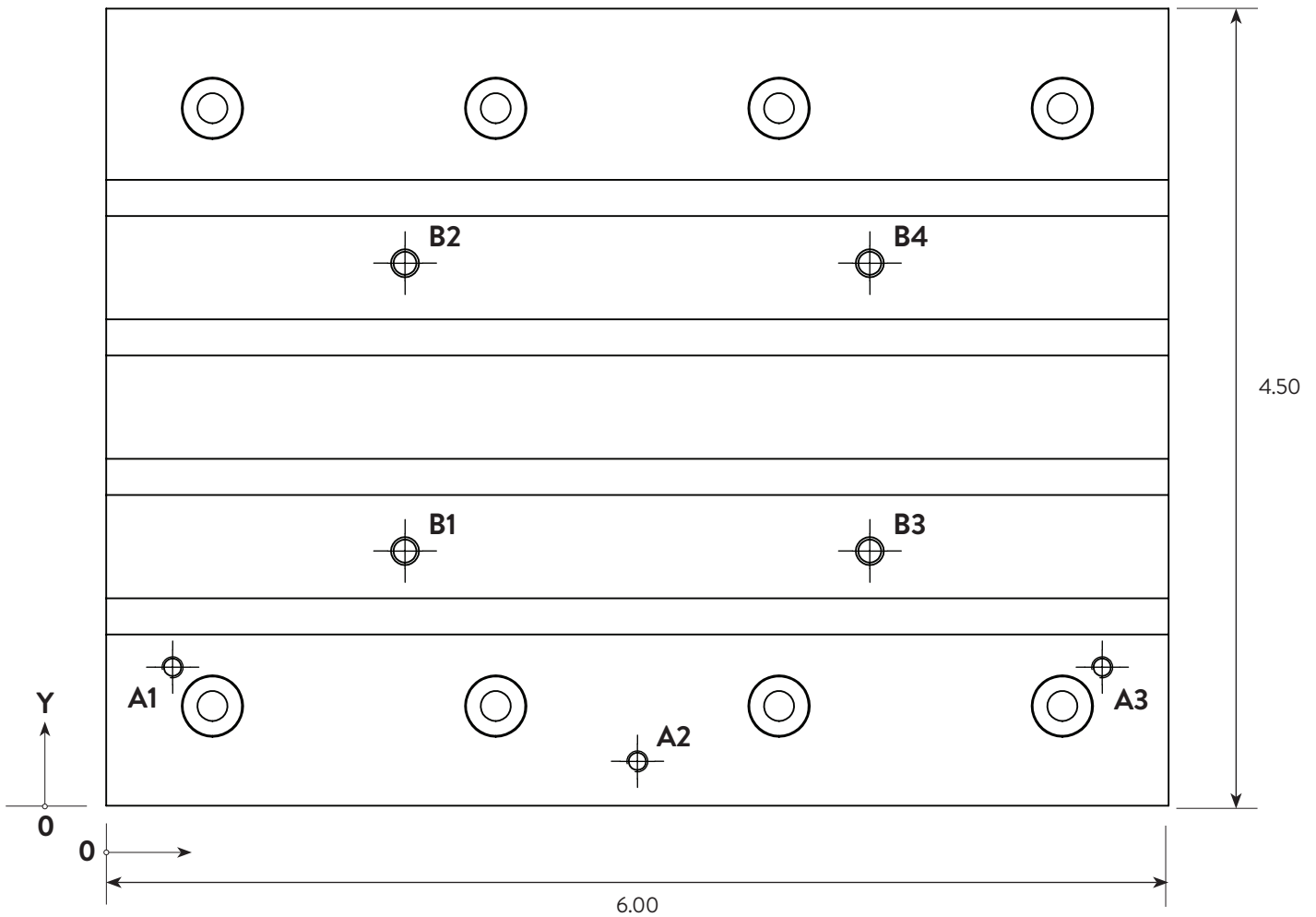


LABEL	X LOCATION	Y LOCATION	DETAILS
A1	0.38 in	0.78 in	M3 threaded hole, down 0.2 in. Intended for attaching the alignment bracket.
A2	3.00 in	0.25 in	
A3	5.63 in	0.78 in	
B1	1.69 in	1.44 in	M4 x 0.7 mm threaded hole, down 0.4 in.
B2	1.69 in	3.06 in	Use these holes to attach a spoilboard to the Y bed using the bolts provided with the Othermill.
B3	4.31 in	1.44 in	
B4	4.31 in	3.06 in	

NOTE: The eight bolts that hold the Y bed to the Othermill should never be loosened or tampered with. Doing so could affect the positional accuracy of the mill.



TOP VIEW



OTHERMILL

Y BED
OTHERMILL V2

OTHERMACHINE.CO/SUPPORT
SUPPORT@OTHERMACHINE.CO
Provided for informational purposes only,
subject to change.



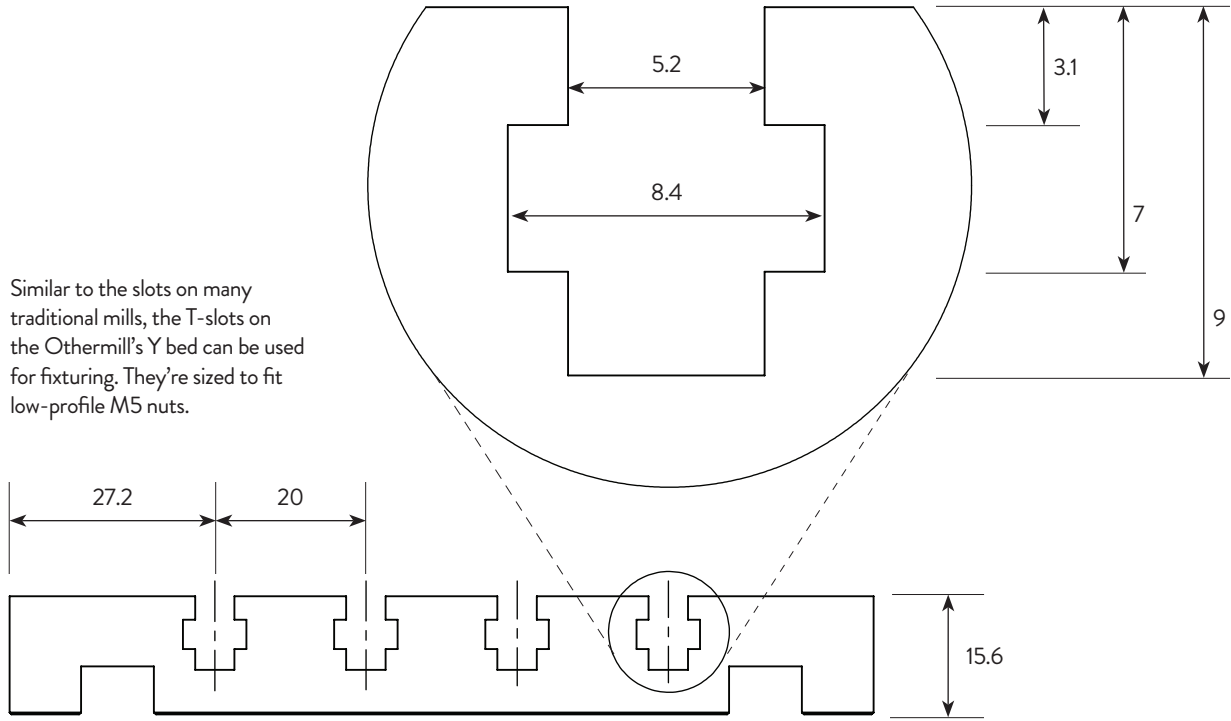
SIDE VIEW

METRIC



All units in millimeters unless otherwise indicated.
5:1 scale

Similar to the slots on many traditional mills, the T-slots on the Othermill's Y bed can be used for fixturing. They're sized to fit low-profile M5 nuts.

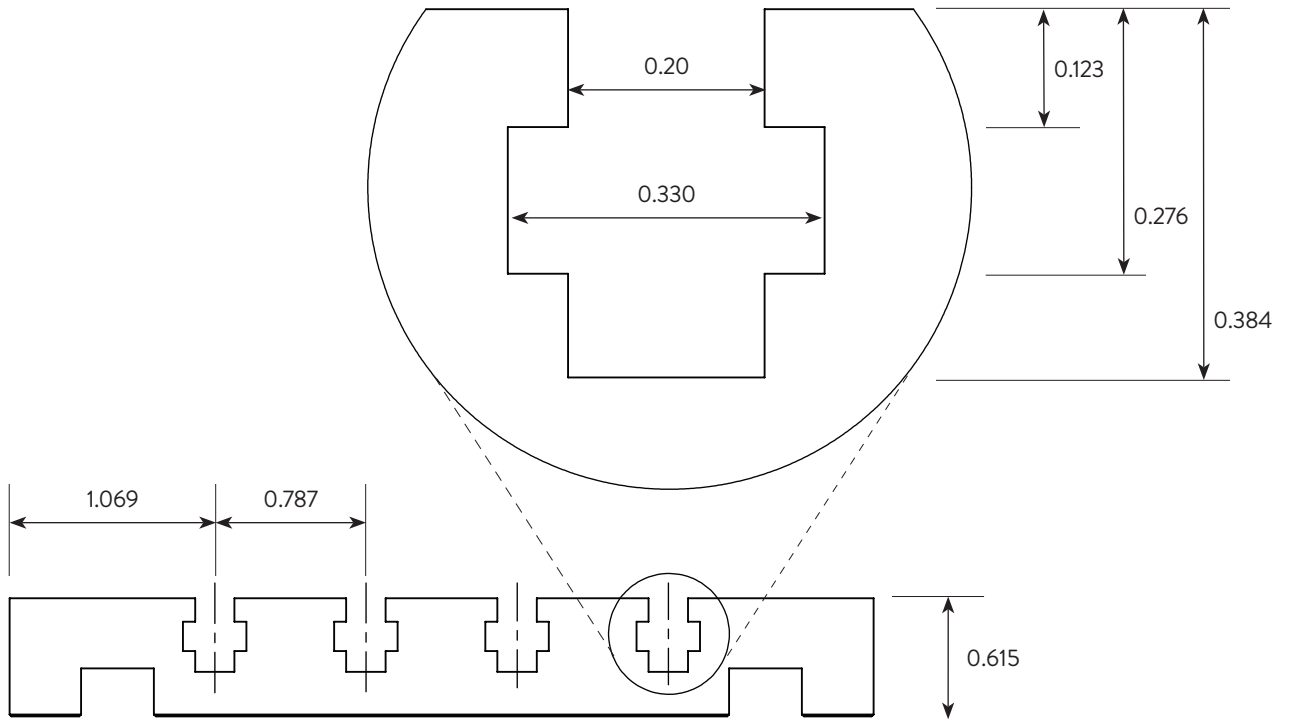


SIDE VIEW

IMPERIAL



All units in inches unless otherwise indicated.
5:1 scale



OTHERMILL

Y BED

OTHERMILL V2

OTHERMACHINE.CO/SUPPORT
SUPPORT@OTHERMACHINE.CO
Provided for informational purposes only,
subject to change.

